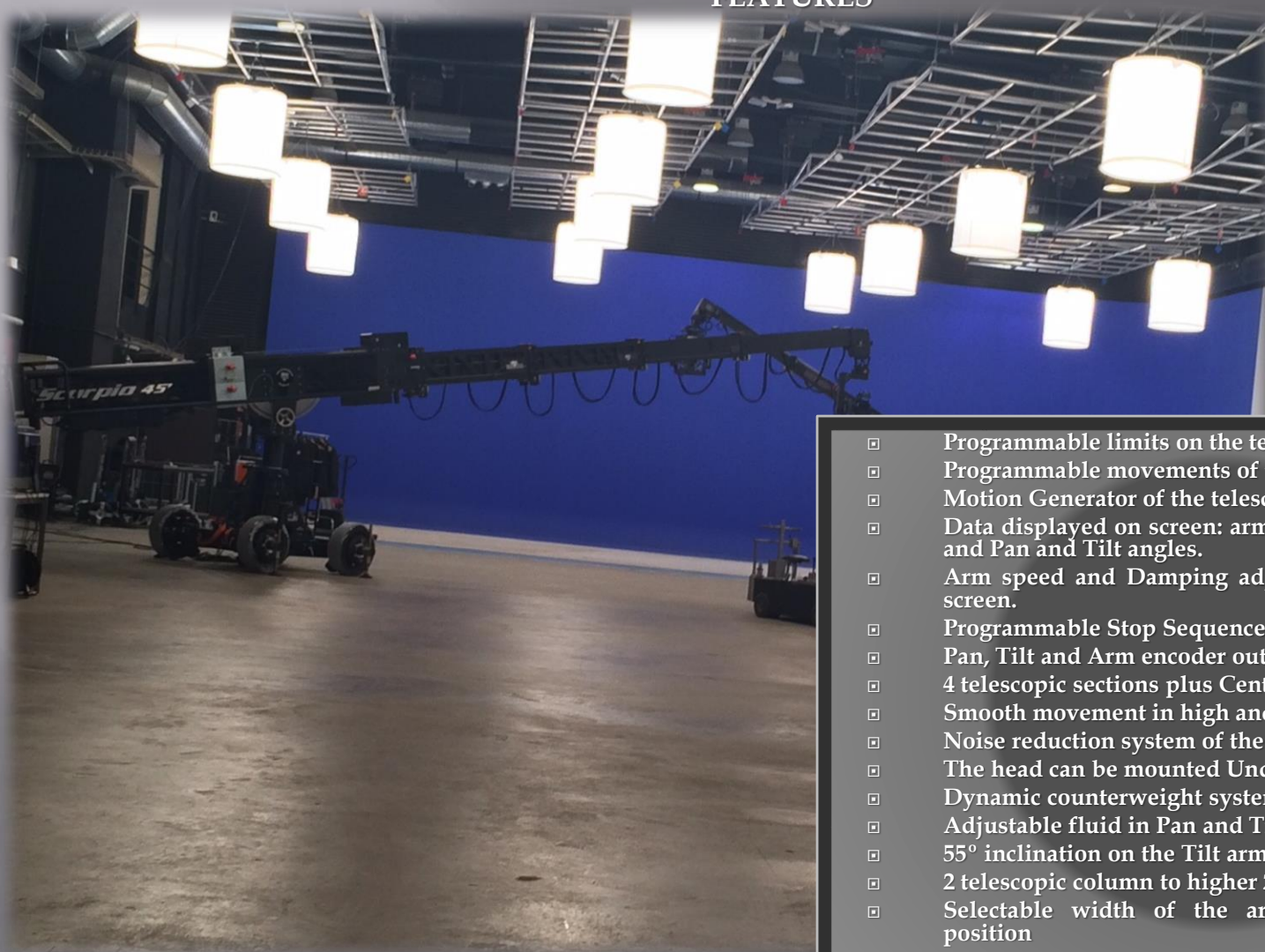


## CRANES

SCORPIO 45' (14 m)

1/5

### FEATURES



- ▣ Programmable limits on the telescopic movement of the arm.
- ▣ Programmable movements of the telescopic arm
- ▣ Motion Generator of the telescopic arm respect to Pan or Tilt.
- ▣ Data displayed on screen: arm range, height of the optic axis and Pan and Tilt angles.
- ▣ Arm speed and Damping adjustable and displayed on the screen.
- ▣ Programmable Stop Sequence.
- ▣ Pan, Tilt and Arm encoder output for Motion Capture jobs.
- ▣ 4 telescopic sections plus Central Arm
- ▣ Smooth movement in high and slow speed
- ▣ Noise reduction system of the telescopic arm movement
- ▣ The head can be mounted Underslung or Overslung
- ▣ Dynamic counterweight system
- ▣ Adjustable fluid in Pan and Tilt
- ▣ 55° inclination on the Tilt arm
- ▣ 2 telescopic column to higher 2 position
- ▣ Selectable width of the articulated legs with lockable position

# CRANES

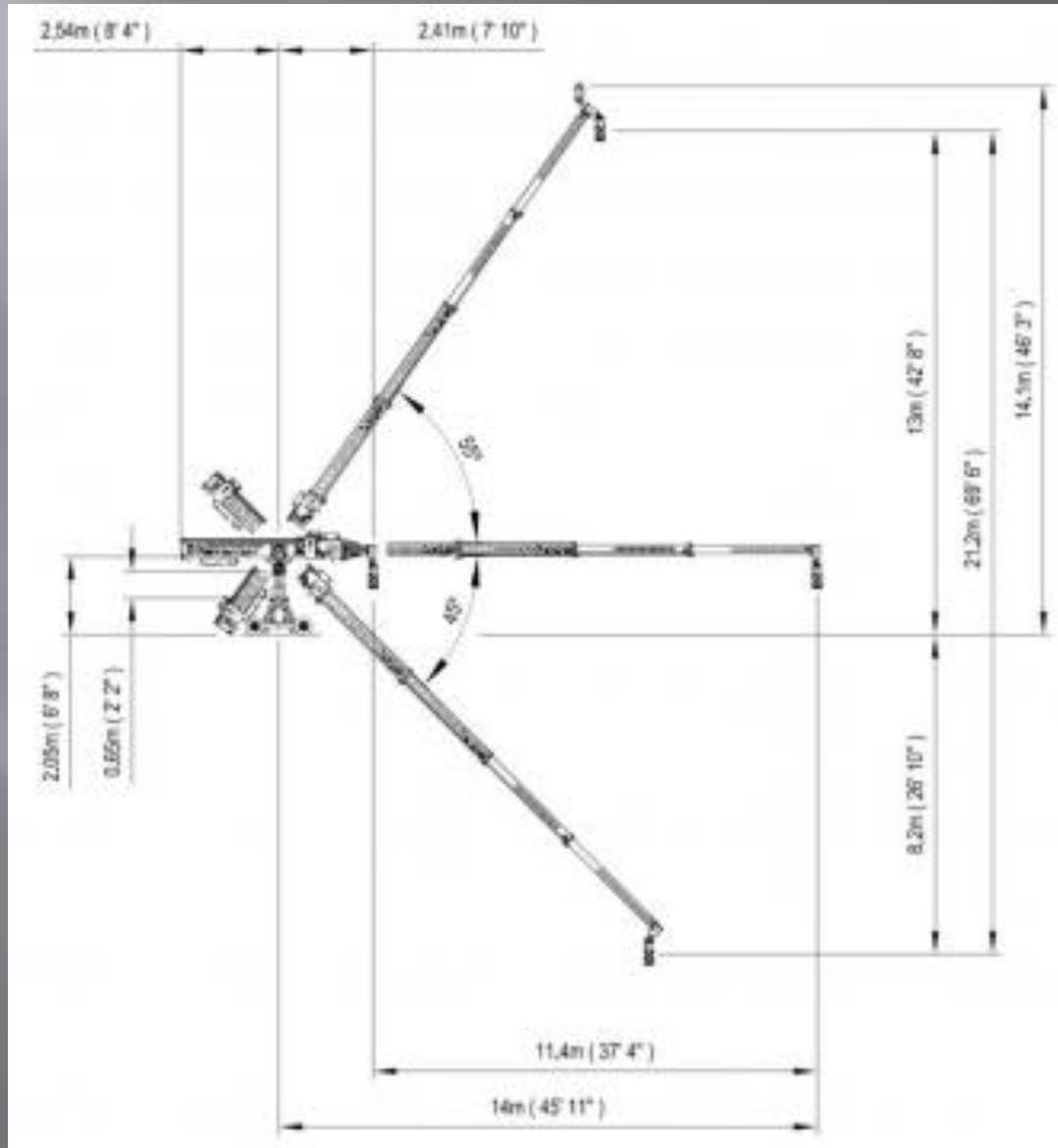
## SCORPIO 45' (14 m) TECH SPECIFICATIONS

2/5

- Maximum length: 14 m (45 11''')
- Minimum length: 2.41m (7' 10'')
- Telescopic range: 11,4 m (37'4'')
- Max. optic axis height: 14,1 m (46'3'')
- Telescopic column maximum extension: 0,65 m (2'2'')
- Payload in Underslung: 70 kg. (154lbs)
- Payload in Overslung: 45 kg. (99lbs)
- Required power: AC 220V/30A or AC110V/30A
- Output power for remote head: DC 30V/20A
- Output power for monitor: DC 12V/3A
- Power required 220 V / 30 A, 110 V / 30 A or 6 kW power generator
- Maximum weight: 2.200 kg (4.850 lb)
- Maximum weight without payload and counterweight: 1.400 kg (3.086 lb)
- Payload in Underslung: 70 kg (154 lb)
- Payload in Overslung: 45 kg (99 lb)
- Maximum arm speed: 2,6 m/s

# CRANES

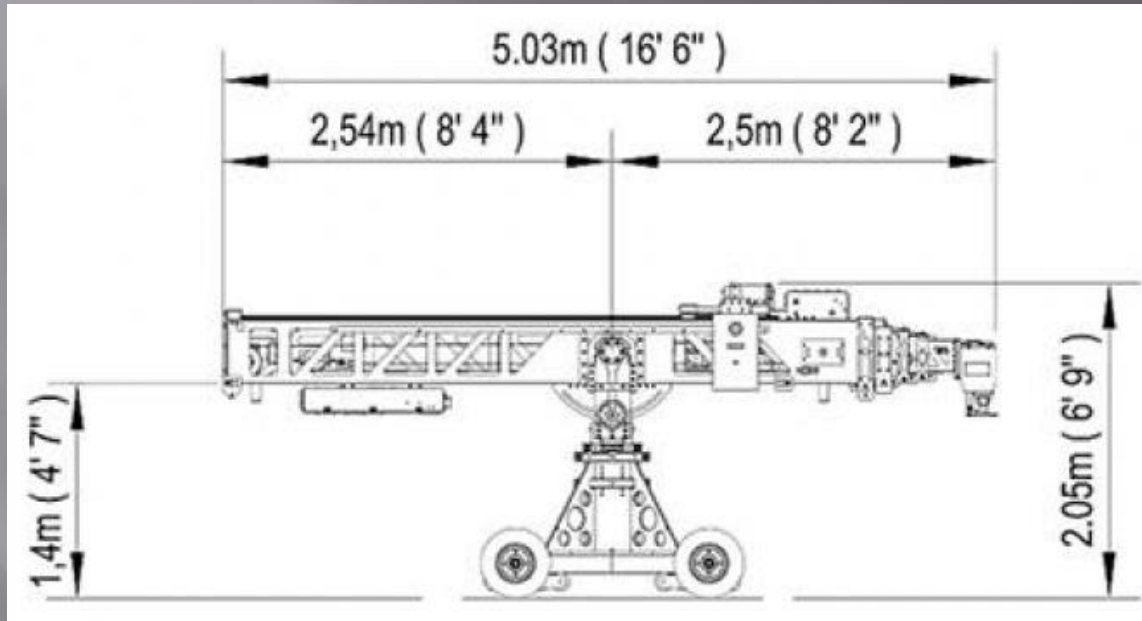
## SCORPIO 45' (14 m) TECH SPECIFICATIONS



# CRANES

## SCORPIO 45' (14 m) TECH SPECIFICATIONS

4/5



# CRANES

SCORPIO 45' (14 m)  
TECH SPECIFICATIONS

5/5

**Minimum HEIGHT**  
2,13 metros

