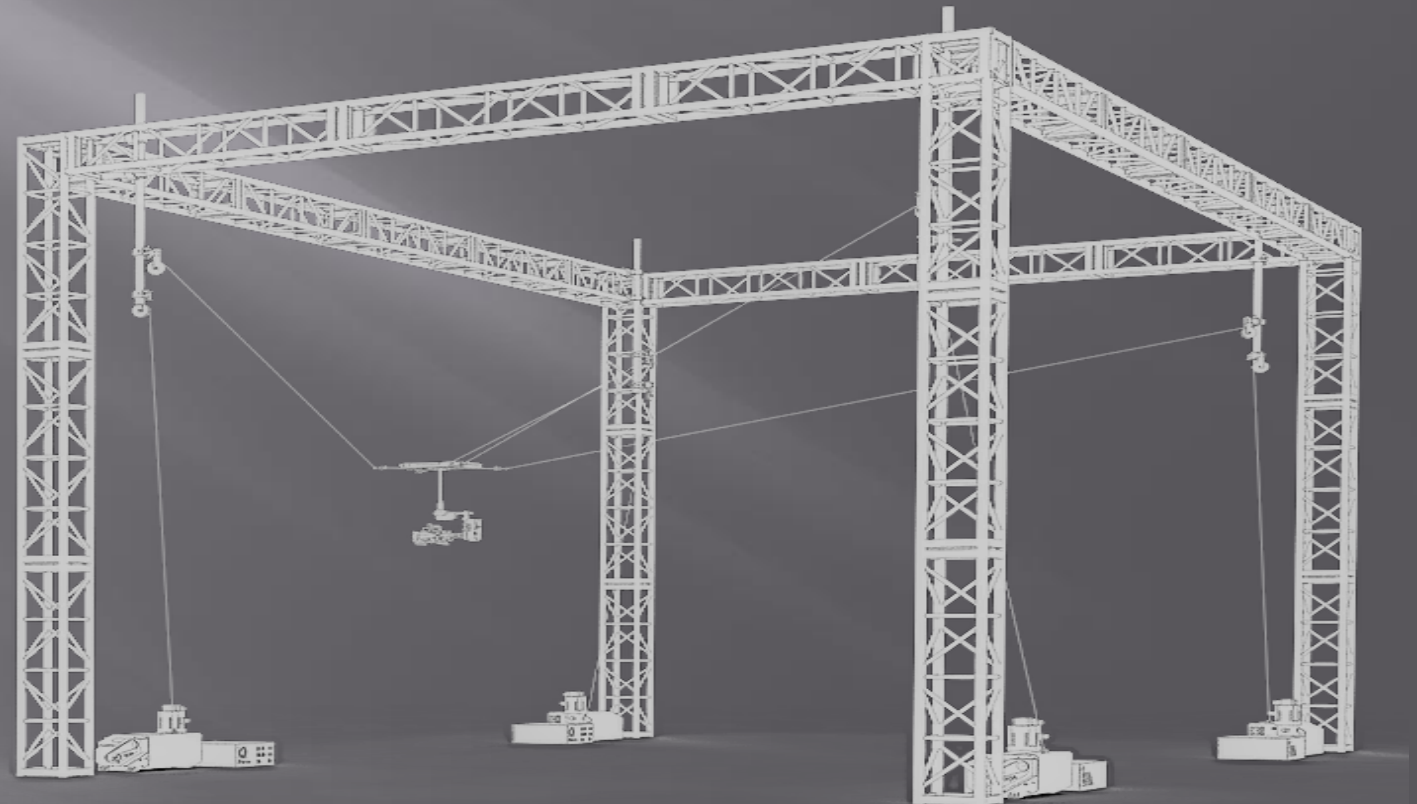


SPIDER CONDOR FLY

- Working area of up to 50X50 meters.
80x80m available son
- Maximum speed of 3 m/s, 10 feet per second
- Fully remote 4K camera control for multi-camera environments
- Live video feed via fiber-optic cable



MAIN COMPONENTS OF THE SYSTEM



MAIN FEATURES

- Communication and 4K signal transferred via winches
- Continuous 360 degree of pan rotation.
- 12V DC power supply for camera and gimbal
- No batteries.



MAIN FEATURES

- Gimbal 3 axis stabilized head
- Weight: 3,7kg (+camera + lens 1kg)
- Dimensions:
 - Length: 40 cm
 - Width: 40 cm
 - Height: 52 cm



- Pilot control console + programmable GUI + control box
Length: 30 cm, Width: 42 cm, Height: 7 cm
- **Safety:**
Emergency stop button + Safety key
Safety limits, including minimum operating height limit
- 2 Joysticks for manual control (X,Y,Z)
- **Graphic User Interface** (touch screen supported)
- **Programmable motion presets** for precise repeatable multi-point motion, spline motion, in all 3 dimensions (X,Y,Z)
- **Custom user profile** enables operators to save personal control settings: joystick sensitivity, joystick exponential curve, speed limits and more.





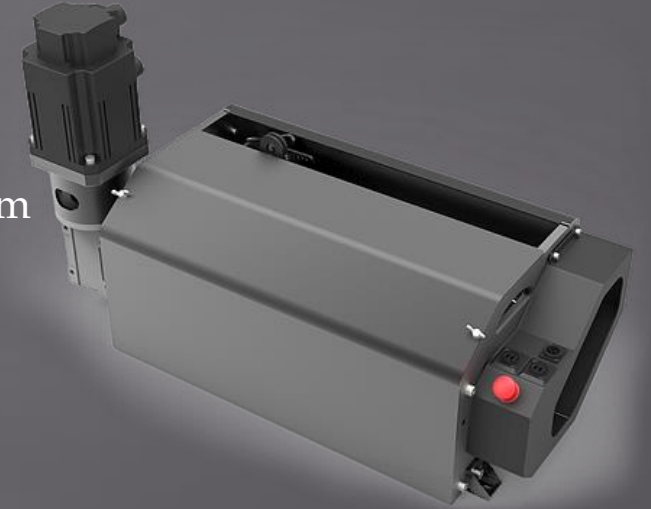
Winches + electric cabinets

4 x Winches

Weight: 43 kg (+motor 8.3 kg) 78.5x32x28 cm

4 x Electric cabinets

Peso: 14 kg. Standard 19" 4U rack



Communication: EtherCAT by CAT7 cable / Fiber Optic

Safety:

Emergency stop button on each unit

Automatic cable slack detection

DynamiCam system includes 4 low power consumption winches, which can be powered from a standard 16A 220V single phase wall socket. Pre-Installed in flight case and ready to use, no need for special rigging tools.

Optional Dual pulley kit, allows for non restricted placement of the winches; for example all 4 winches can be placed in one corner of the working area.